

# CERTIFICATE OF LOCATION OF GOVERNMENT CORNER

NORTHEAST Corner of Section 2, Township 106, Range 39, 5TH P.M.

STATE OF MINNESOTA, County of MURRAY

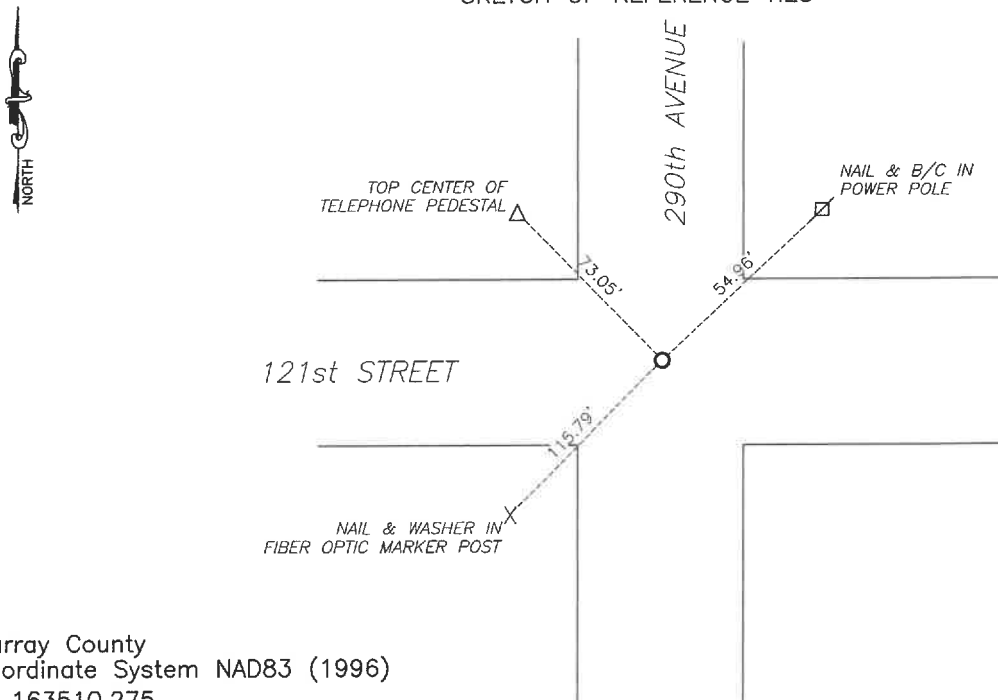
At the corner location shown on the sketch:

☒ On 7/22/2024 found a large field stone with smaller stones around it.  
DATE

☒ left monument as found, ☐ lowered monument, ☐ removed monument (explain)

☒ On 1/16/2025 placed a 5/8" iron with seal #43844 over top of the stone.  
DATE

SKETCH OF REFERENCE TIES



Murray County  
Coordinate System NAD83 (1996)  
N: 163510.275  
E: 574733.403

WGS84  
LAT: 44°01'18.8801"  
LON: -95°28'57.2859"

Statement of evidence relative to this corner location is on back of page.

I hereby certify that this document and the data contained herein was prepared by me or under my direct supervision.



Daniel L. Buettel  
License No. 43844

3/12/2025  
DATE

MAR 13 2025



MURRAY COUNTY RECORDER

### Statement of Evidence

#### NORTHEAST CORNER SECTION 2, T106N, R39W of the 5th P.M.

In September 1858, W.J. Neely surveyed the east township line.

In July of 1861, J.W. Myers surveyed the north, south, and west township lines.

In August of 1861, Wellman & Smoot subdivided the township.

A survey in September of 1892 shows a marked stone at the corner.

1954 - County records show a stone was found.

County records from July 17, 1973 shows that a field stone was found at the corner and a steel pin placed above it.

June 22, 2021, Bueltel-Moseng Land Surveying found a 5/8" smooth iron.

On July 22, 2024 Bueltel-Moseng Land Surveying found a 5/8" smooth iron, removed and dug with a backhoe and found a large field stone with smaller stones around it. Placed 5/8" iron on the south side for locating purposes.

On January 16, 2025 we set a 5/8" iron with seal #43844 over top of the stone.